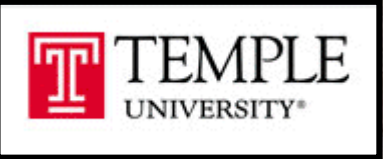


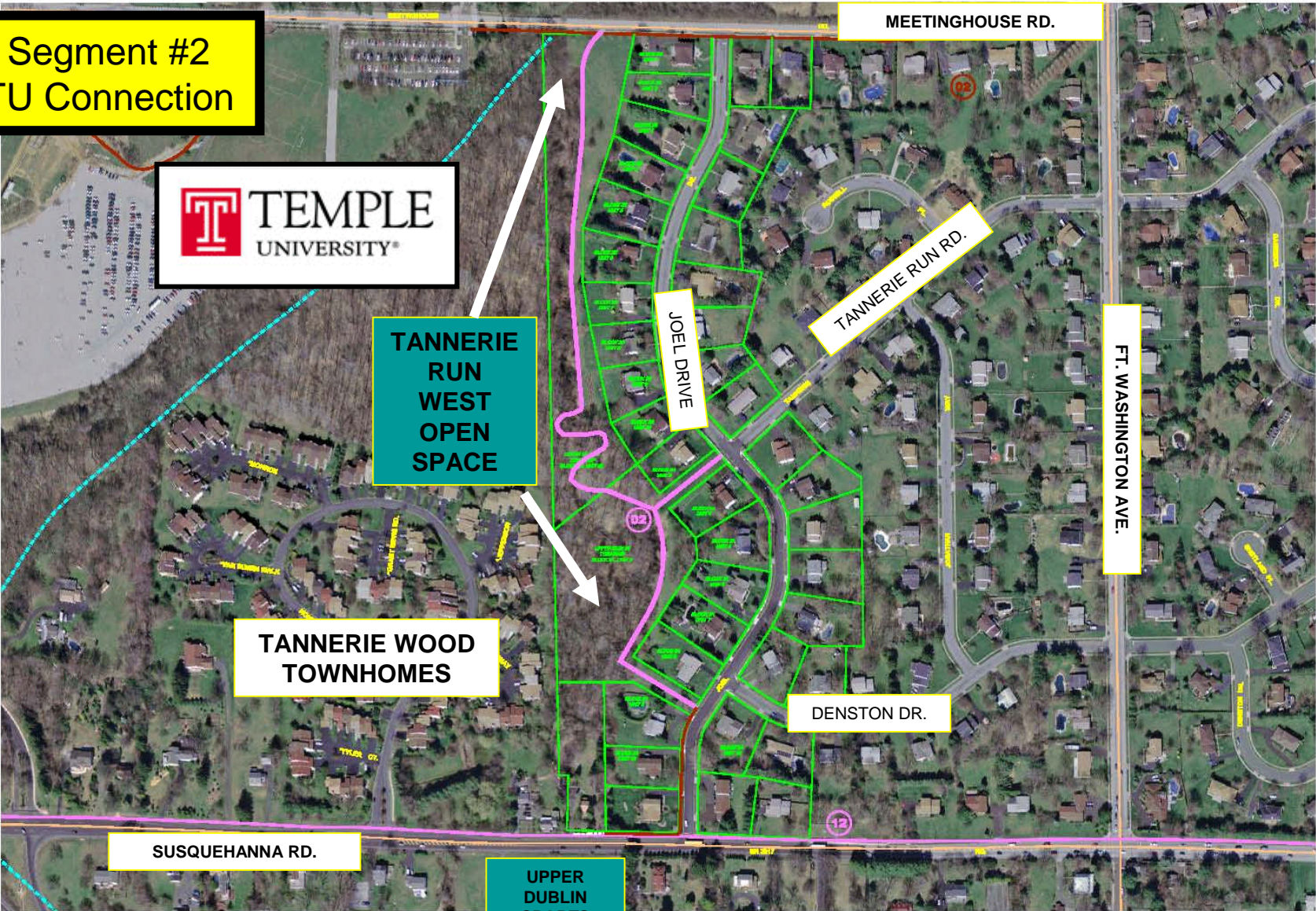
**Segment #2
TU Connection**



**TANNERIE
RUN
WEST
OPEN
SPACE**

**TANNERIE WOOD
TOWNHOMES**

**UPPER
DUBLIN
SPORTS
PARK**



<ul style="list-style-type: none"> PROPERTY BOUNDARIES EXISTING UTILITY LINES PROPOSED UTILITY LINES PROPOSED DEVELOPMENT PROPOSED DEVELOPMENT PROPOSED DEVELOPMENT PROPOSED DEVELOPMENT 	<ul style="list-style-type: none"> PROPOSED DEVELOPMENT PROPOSED DEVELOPMENT PROPOSED DEVELOPMENT PROPOSED DEVELOPMENT PROPOSED DEVELOPMENT PROPOSED DEVELOPMENT PROPOSED DEVELOPMENT
---	--

JANUARY 2008
**COUNTY APPLICATION
AREA 2**
UPPER DUBLIN TOWNSHIP, MONTGOMERY COUNTY, PENNSYLVANIA

PROPOSED TOTAL COUNTY LENGTH = 2,573 FEET
PROPOSED TOTAL TOWNSHIP LENGTH = 84 FEET

