

CAMP B.I.G.

Children ages 4 1/2 to 5
(child must turn 4 by 2/3/12)

Jarrettown Elementary School

Monday to Friday

CAMP B.I.G. - A.M. Program

Monday, June 25 to Friday, August 3

(no camp Wednesday, July 4)

8:30a - noon

16 min./24 max. per week

CAMP B.I.G. - P.M. Program

Monday, June 25 to Friday, August 3

(no camp Wednesday, July 4)

noon - 3:00p

10 min./24 max. per week

Camp B.I.G. (Before I'm Grown) is designed for your older *pre-school* child who may have been in a day care or nursery school setting throughout the school year. Your child will participate in games, arts & crafts, free play time and other activities. "Special Guests" are scheduled throughout the summer. Camp B.I.G.'s staff includes an Instructor along with two Aides, who are responsible for leading your child in a variety of fun and exciting activities.

Every week we have **Wet And Wild Wednesday!**

Be sure to send your child to Camp B.I.G in their bathing suit along with a towel and change of clothes to play water games outside mid-morning (weather permitting).

PRICING SCHEDULE

Dates	Camp B.I.G. (A.M.)	Camp B.I.G. (P.M.)
Week 1 — 6/25-6/29	\$70R / \$80NR	\$60R / \$70NR
Week 2 — 7/2-7/6 (no 7/4)	\$58R / \$68NR	\$48R / \$58NR
Week 3 — 7/9-7/13	\$70R / \$80NR	\$60R / \$70NR
Week 4 — 7/16-7/20	\$70R / \$80NR	\$60R / \$70NR
Week 5 — 7/23-7/27	\$70R / \$80NR	\$60R / \$70NR
Week 6 — 7/30-8/3	\$70R / \$80NR	\$60R / \$70NR

Registration in A.M. is not necessary to enroll in P.M.

Children who are attending both A.M. & P.M. should bring a lunch and beverage from home.

Resident (R) = child must reside in Upper Dublin Township year-round

Non-resident (NR) = all others

GENERAL INFORMATION

Camp B.I.G. and Small Folks sites are each managed by a qualified staff including a **Site Instructor** and two **Aides** (high school age & older). The programs are under the direction of the **Recreation Specialist**. Your child will participate in games, arts & crafts, free play time and other activities. "Special Guests" are scheduled throughout the summer. Weekly theme and activities sheets will be provided to you the first day of camp so you can prepare yourself and your camper for a week full of fun!

REGISTRATION INFORMATION

To ensure the proper registration process, please follow these simple measures . . .

1. Submit registration forms at the UDP&R OFFICE or online at www.upperdublin.net. No registration forms will be accepted before Monday, April 9 at 9:00am.
2. If registering at the UDP&R office, please fill out a registration form, available Thursday, April 5 at 5p. Be sure to sign and date the form and submit with FULL payment (cash, Visa, MasterCard, Discover or check made payable to *Upper Dublin Township*). Forms are available in the UDP&R information bins 24 hours per day.
3. Proof of residency may be required before your registration is accepted or fully processed. If this is the case, you will be contacted by a UDP&R Customer Service Representative.
4. **Parent/Guardian MUST sign the form for registration to be processed.**

CANCELLATION / REFUND POLICY

We know that plans can change, but UDP&R makes commitments to summer staff, performers and entertainment venues based upon registration numbers.

We urge you to consider these policies when registering for UDP&R's Small Folks or Camp B.I.G.

- ◆ Cancellation before 5p on Friday, June 1 results in a full refund minus \$5 Administrative Fee *per child per week*.
- ◆ Cancellation until 5p on Monday, June 11 results in a 50% refund minus \$5 Administrative Fee *per child per week*.
- ◆ Refund for cancellation after 5p on Monday, June 11 is not guaranteed. Requests are handled on a case-by-case basis and are dependent upon overall registration numbers. Refunds will be at the discretion of the UDP&R management team and based upon years of established precedent.

SMALL FOLKS

Children ages 3 to 4 1/2

(Child must be 3 by the start of the program)

Jarrettown Elementary School

5-Day Program (Mo - Fr)

Monday, June 25 to Friday, August 3

(no camp Wednesday, July 4)

8:30a - noon

10 min./24 max. per week

3-Day Program (Tu, We, Th)

Tuesday, June 26 to Thursday August 2

8:30a - noon

16 min./24 max. per week



This three hour a day, three or five day a week camp is for your younger child (*must be potty-trained*) who is looking for a little diversity in his/her summer routine! Your child will participate in games, arts & crafts, free play time and best of all, will interact with others. "Special Guests" are scheduled throughout the summer. The Site Instructor along with two aides, will lead your child in a variety of fun and exciting activities.

Every week we have **Wet And Wild Wednesday!**

Be sure to send your child to Small Folks in their bathing suit along with a towel and change of clothes to play water games outside mid-morning (weather permitting).

PRICING SCHEDULE

Dates	5 Day (Mo - Fr)	3 Day (Tu, We, Th)
Week 1 — 6/25-6/29	\$70R / \$80NR	\$46 R / \$56 NR
Week 2 — 7/2-7/6 (no 7/4)	\$56 R / \$76 NR	\$31 R / \$41 NR
Week 3 — 7/9-7/13	\$70R / \$80NR	\$46 R / \$56 NR
Week 4 — 7/16-7/20	\$70R / \$80NR	\$46 R / \$56 NR
Week 5 — 7/23-7/27	\$70R / \$80NR	\$46 R / \$56 NR
Week 6 — 7/30-8/3	\$70R / \$80NR	\$46 R / \$56 NR

Resident (R) = child must reside in Upper Dublin Township year-round

Non-resident (NR) = all others

SUMMER DISCOUNT TICKETS

Discount tickets are available at the UDP&R office beginning mid-May. Tickets are valid for the entire 2012 season. All sales are final. Call UDP&R to place your order at least one business day before the day you wish to pick up your tickets. Cash or credit cards accepted. Call for prices (215) 643-1600 x3443 or visit www.upperdublin.net.

<i>Adventure Aquarium</i>	<i>Hershey Park</i>
<i>Baltimore Aquarium</i>	<i>Six Flags/Great Adventure</i>
<i>Busch Gardens</i>	<i>Morey's Pier</i>
<i>PA Renaissance Faire</i>	<i>Sesame Place</i>
<i>Dorney Park</i>	<i>Dutch Wonderland</i>
<i>Philadelphia Zoo</i>	<i>and more!!</i>

REGAL MOVIE TICKETS

(available all year)

\$7.50 per ticket*

**Not valid during the first 14 days of "selected" new release films or for special engagements. An upgrade fee may be paid at the box office to gain admission to date-restricted films.*

QUESTIONS?

Contact UDP&R at (215) 643-1600 x 3443

Anne Frederick, Janice Smith, Joanne McBrien

Customer Service Representatives

Jo Frayler, *Administrative Assistant*

Cheyenne Youell, *Recreation Specialist*

Tammy Echevarria, *Recreation Superintendent*

Derek Dureka, *Director of Parks & Recreation*

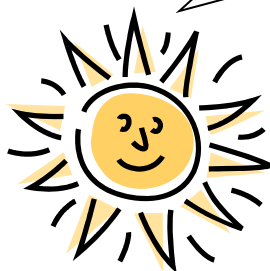
Upcoming Summer Kids Programs and Events...

*Are available online at
www.upperdublin.net and in your
2012 Spring/ Summer Leisure
Guide*

**Call 215-643-1600 x3443 for more
information**

For updated information, tune to the
UDTV Message Board on Verizon/Comcast
channel 20/28, visit www.upperdublin.net or sign up
for the P&R E-Newsletter.

Find Upper Dublin Parks
and Recreation on
facebook for even MORE
information!



facebook



Community Parks & Recreation for a Lifetime CAMP B.I.G. & SMALL FOLKS 2012 Information Guide

CAMP B.I.G.

Children ages 4 1/2 to 5

Monday to Friday

Jarrettown Elementary School

CAMP B.I.G. - A.M. Program

Monday, June 25 to Friday, August 3

(no camp Wednesday, July 4)

8:30a - noon

CAMP B.I.G. - P.M. Program

Monday, June 25 to Friday, August 3

(no camp Wednesday, July 4)

noon - 3:00p

SMALL FOLKS

Children ages 3 to 4 1/2

Jarrettown Elementary School

8:30a - noon

3 or 5-Day Program (Tu-Th or Mo-Fr)

Monday, June 25 to Friday, August 3

(no camp Wednesday, July 4)

3-Day Program (Tu, We, Th)

Tuesday, June 29 to Thursday, August 5

REGISTRATION begins:

- ◆ MONDAY, April 9 at 9a for Resi-
dents & Non-Residents

4/9

Registration Forms Available 4/5 at 5p online at
www.upperdublin.net or in the UDP&R lobby